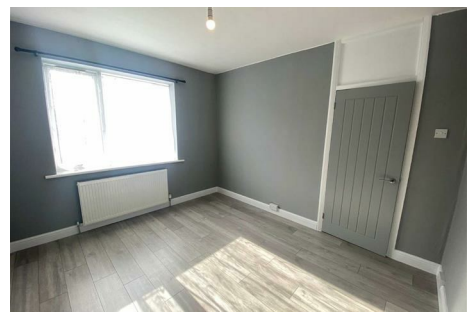




# Parkfields

Estates



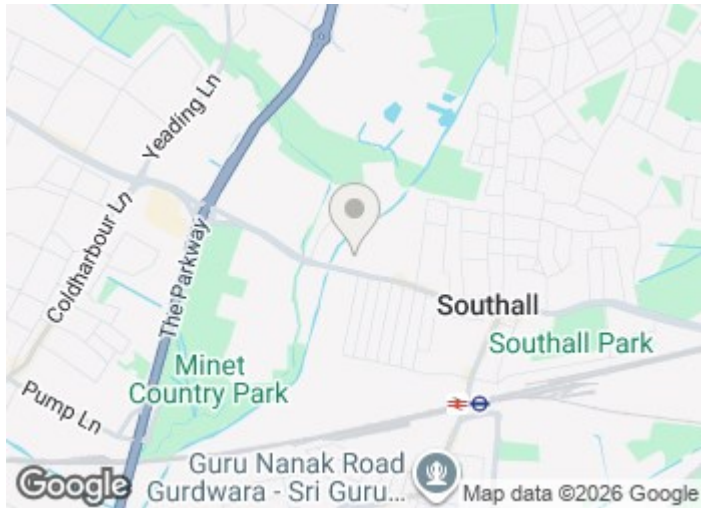
## Livingstone Road , Southall, UB1 1PH

A NEWLY DECORATED GROUND FLOOR MAISONETTE LOCATED JUST OFF SOUTHALL BROADWAY! Presented in EXCELLENT ORDER THROUGHOUT - Accommodation includes; TWO BEDROOMS, LOUNGE, KITCHEN AND BATHROOM/WC. To the outside there is a PRIVATE REAR GARDEN AND FRONT GARDEN WITH OFF STREET PARKING. UXBRIDGE ROAD, A312 PARKWAY AND THE M4 are all within easy motoring distance. AVAILABLE NOW.

EALING COUNCIL TAX BAND B

**£2,000 Per Month**

# 13 Livingstone Road , Southall, UB1 1PH



[Directions](#)



# Floor Plan

These particulars, whilst believed to be accurate are set out as a general outline only for guidance and do not constitute any part of an offer or contract. Intending purchasers should not rely on them as statements of representation of fact, but must satisfy themselves by inspection or otherwise as to their accuracy. No person in this firm's employment has the authority to make or give any representation or warranty in respect of the property.

1 The Crescent, Southall, Middlesex, UB1 1RE  
Tel: 0208 571 0253 Email: [info@parkfields-estates.com](mailto:info@parkfields-estates.com) <https://www.parkfields-estates.com>

Energy Efficiency Rating		Current	Potential
<i>Very energy efficient - lower running costs</i>			
(92 plus) <b>A</b>			
(81-91) <b>B</b>			
(69-80) <b>C</b>			
(55-68) <b>D</b>			
(39-54) <b>E</b>			
(21-38) <b>F</b>			
(1-20) <b>G</b>			
<i>Not energy efficient - higher running costs</i>			
<b>England &amp; Wales</b>		EU Directive 2002/91/EC	